

1 KIT : 50€

10+ KITS: 45€

20+ KITS: 40€

CST05

U5



CST04



CST04



DO IT YOURSELF!

More simple & Even More Beautiful!

RANDOM
GLITTER & BEIGE



CST01

RANDOM
GLITTER & BROWN



CST02

RANDOM
GLITTER & TURQUOISE



CST03

RANDOM
BLACK & WHITE



CST04

RANDOM
WHITE & GREY



CST05

RANDOM
ANTHRACITE & SILVER



CST06

RANDOM
BLACK & MARBLE



CST07

RANDOM
MARBLE AND SILVER



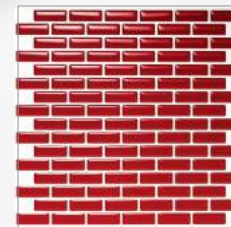
CST08

RANDOM
BEIGE & BROWN



CST09

RED
MOSAIC



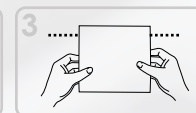
CST10



1
Clean the surface
You wish to cover



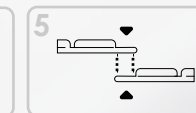
2
Peel off the liner on the
backside of the sheets



3
Adjust as needed



4
Press firmly throughout
the whole sheet



5
Overlapping the edges
create a more natural
looking result



MULTI-PACK
x 10
UNITS



SIZES
245MM * 235MM

TILES
COVERSTYL®
Smart Interior Design

www.coverstyl.com

**DO IT
YOURSELF!**
More simple & Even More Beautiful!



**'TILES'
COVER STYL**

Smart Interior Design

COVER STYL' TILES

RECOMMENDED SURFACES:

SMOOTH CERAMIC TILES (BACKSPLASH), SMOOTH GLASS TILES, WALL PANEL (ACRYLIC), WALL LINOLEUM, MIRROR, WALLPAPER

NON RECOMMENDED SURFACES:

STUCCO WALL, UNFINISHED WALL (GYPSUM OR PLASTER), UNPAINTED PLYWOOD

CST04



UPGRADE CLEAN,
DUST-FREE AND ODORLESS



UPGRADE INSTEAD
OF REPLACE



IN NO
TIME SOLUTION



STUNNING "3D"
EFFECT



EASY TO APPLY
AND REMOVE



ANTI MOLD AND
ANTI BACTERIAL



DO IT
YOURSELF



RENOVATION
AT FRACTION OF COST



DON'T STOP
YOUR DAILY BUSINESS



1 Clean the surface
You wish to cover

2 Peel off the liner on the
backside of the sheets

3 Adjust as needed

4 Press firmly throughout
the whole sheet

5 Overlapping the edges
create a more natural
looking result



PRODUCT FEATURES

- The peel-and-stick feature allows easy installation + saves you time and money.
- This can be used on any sleek and clean surface, such as glass, gypsum, wall panel and even over existing tiles with a smooth surface.
- Strong resistance to moisture and heat. The curing period is 24hrs after installation.
- It is easy to maintain. Stains can easily be removed using a sponge.
- Anti-fungal, antibacterial, heavy-metal free, formaldehyde-free

INSTALLATION INSTRUCTION & DIRECTIONS

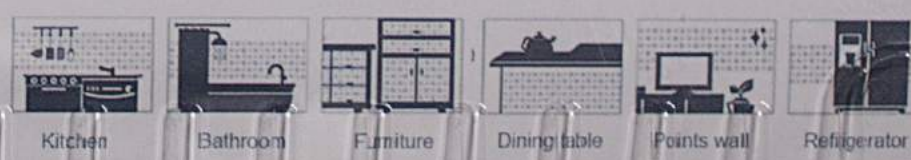
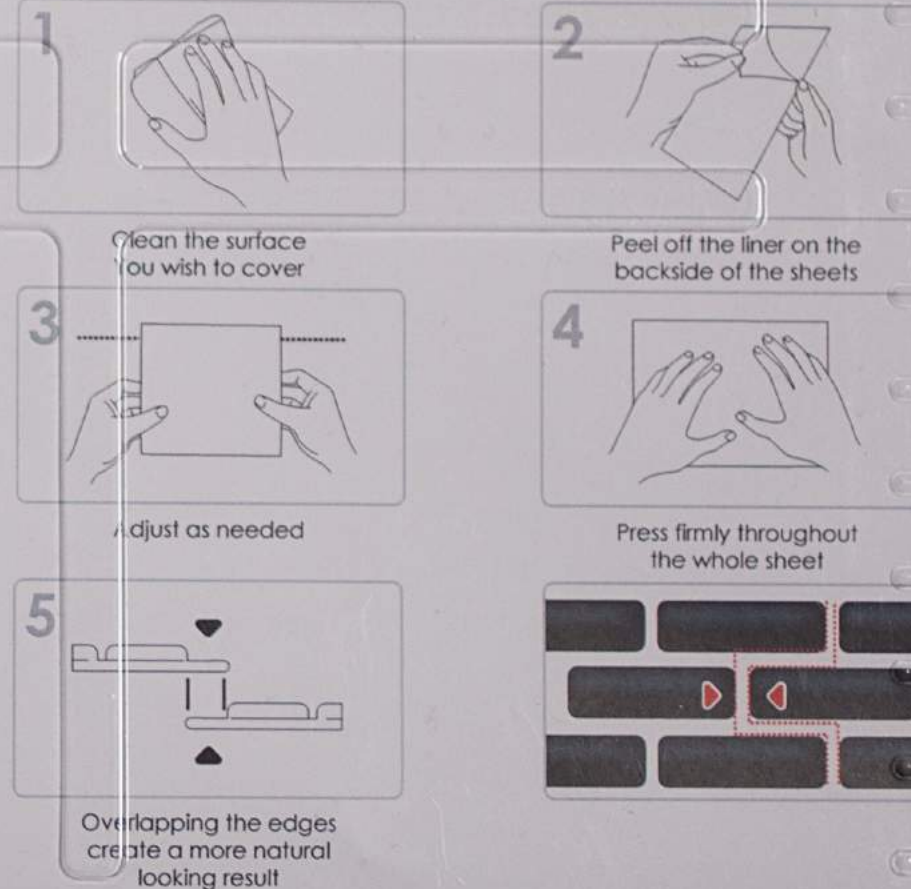
1. Cleaning: First, wash the surface with a powerful grease-remover such as TSP (Tri-Sodium Phosphate). Make sure you allow enough time for the surface to dry properly.
2. Tip: For optimal adhesiveness, you can also gently scrub painted surfaces using a soft sandpaper to remove the oily or glossy layer of the paint.
3. Temperature: The temperature of the wall and tiles should be at least 21C for 12hours before installing and 24 hours after installation
4. Installing: Do not install on fresh paint: Allow minimum of 3 weeks for the paint to dry before installing the tiles
5. Avoid contact with direct fire: Allow a minimum distance of at least 30cm from flames

RECOMMENDED SURFACES

Smooth ceramic tiles (backsplash), smooth glass tiles, Wall panel (Acrylic), Wall linoleum, Mirror, Wallpaper

Non recommended surfaces:

Stucco wall, unfinished wall (gypsum or plaster), unpainted plywood



DO IT YOURSELF!

More simple & Even More Beautiful!

*10



SIZES

245MM * 235MM

DON'T STOP
YOUR DAILY BUSINESS



RENOVATION
AT FRACTION OF COST



DO IT
YOURSELF



ANTI MOLD AND
ANTI BACTERIAL



EASY TO APPLY
AND REMOVE



STUNNING ~30°
EFFECT



IN NO
TIME SOLUTION



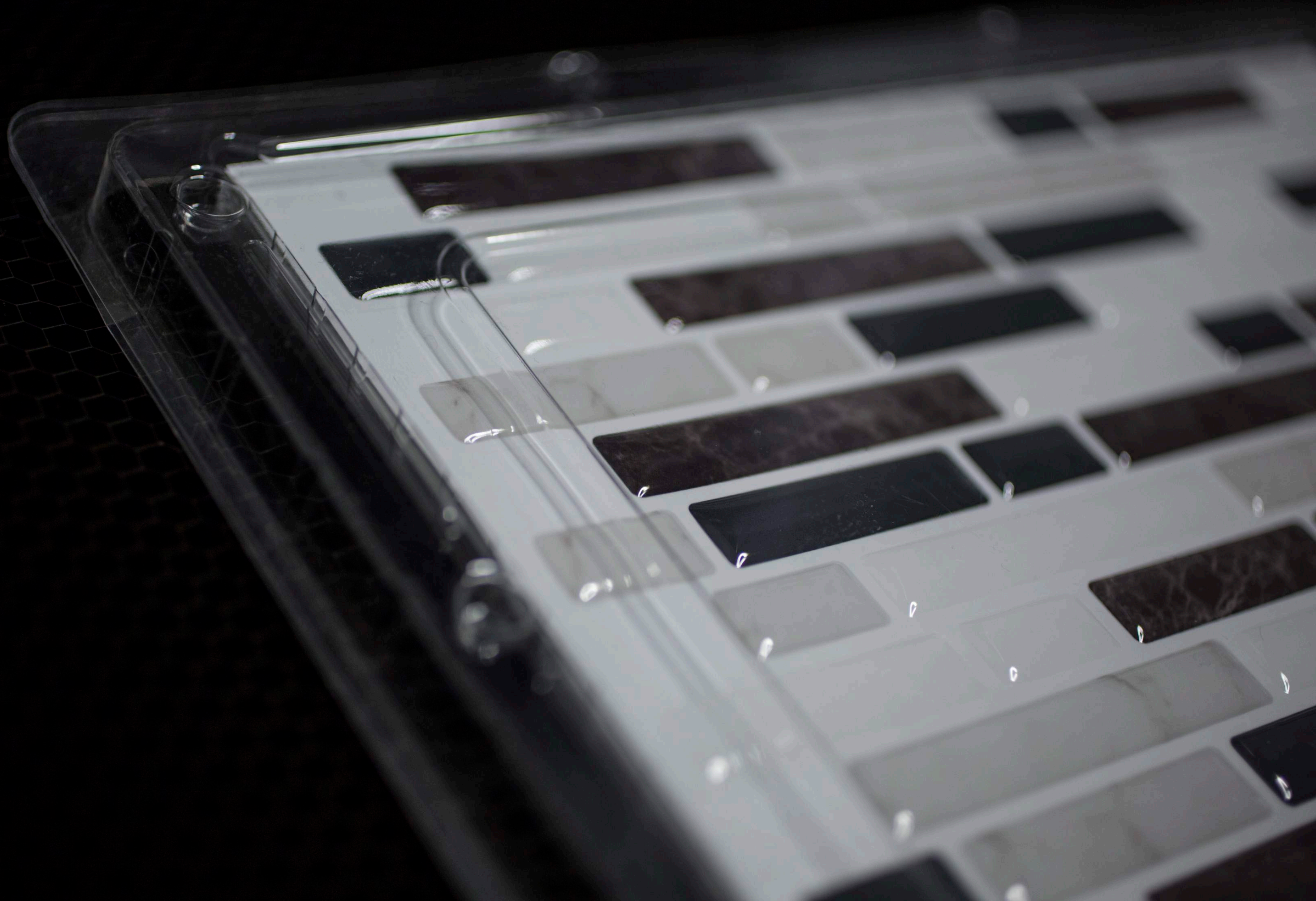
UPGRADE INSTEAD
OF REPLACE



UPGRADE CLEAN,
DUST-FREE AND ODOORLESS



TILES
COVER STYL
Smart Interior Design





U5

PRODUCT FEATURES

The peel-and-stick feature allows easy installation + saves you time and trouble.
It can be used on any sleek and clean surface, such as glass, gypsum, metal, etc.
It is resistant to moisture and heat. The curing period is 24hrs after installation. Stains can easily be removed using a sponge.
Environmentally friendly, heavy metal free, formaldehyde-free.

INSTRUCTION & DIRECTIONS

1. Clean the surface with a powerful grease-remover such as 409 cleaner. Make sure you allow enough time for the surface to dry completely.
2. Peel the sticker off the backing paper and gently scrub painted surfaces to remove the old or glossy layer of the paint.
3. Stick the sticker on the wall and let it cure for a minimum of 3 weeks for the adhesive to fully bond.

Clean the surface
You wish to cover

Adjust as needed



PRODUCT FEATURES

- The peel-and-stick feature allows easy installation + saves you time and money.
- This can be used on any sleek and clean surface, such as glass, gypsum, wall panel and even over existing tiles with a smooth surface.
- Strong resistance to moisture and heat. The curing period is 24hrs after installation.
- It is easy to maintain. Stains can easily be removed using a sponge.
- Anti-fungal, antibacterial, heavy-metal free, formaldehyde-free

INSTALLATION INSTRUCTION & DIRECTIONS

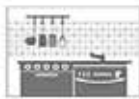
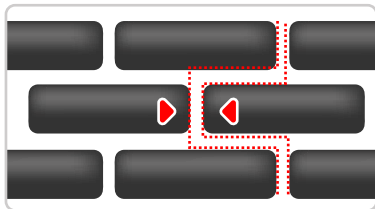
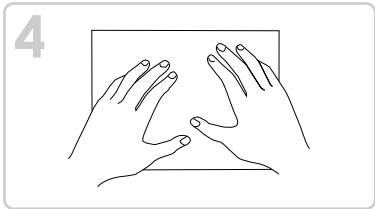
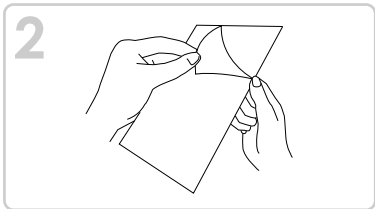
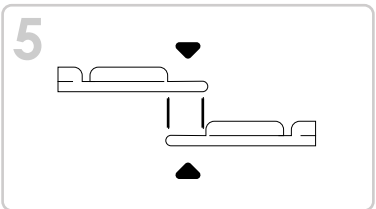
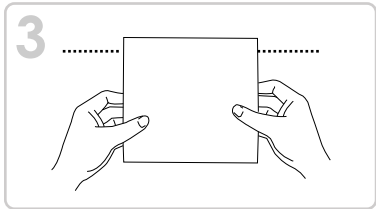
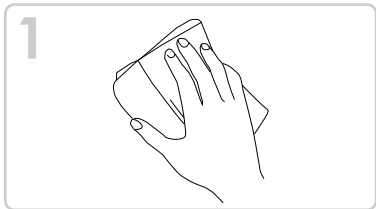
1. Cleaning: First, wash the surface with a powerful grease-remover such as TSP (Tri-Sodium Phosphate). Make sure you allow enough time for the surface to dry properly.
2. Tip: For optimal adhesiveness, you can also gently scrub painted surfaces using a soft sandpaper to remove the oily or glossy layer of the paint.
3. Temperature: The temperature of the wall and tiles should be at least 21C for 12hours before installing and 24 hours after installation
4. Installing: Do not install on fresh paint: Allow minimum of 3 weeks for the paint to dry before installing the tiles
5. Avoid contact with direct fire: Allow a minimum distance of at least 30cm from flames

RECOMMENDED SURFACES

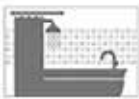
Smooth ceramic tiles (backsplash), smooth glass tiles, Wall panel (Acrylic), Wall linoleum, Mirror, Wallpaper

Non recommended surfaces:

Stucco wall, unfinished wall (gypsum or plaster), unpainted plywood



Kitchen



Bathroom



Furniture



Dining table



Points wall



Refrigerator

DO IT YOURSELF!

More simple & Even More Beautiful!

Smart Interior Design
COVER STYL

***10 SIZES**
245MM * 235MM

DO IT YOURSELF
DON'T STOP YOUR DAILY BUSINESS

SAVINGS
AT FRACTION OF COST

DO IT YOURSELF

ANTI MOLD AND ANTI BACTERIAL

EASY TO APPLY AND REMOVE

STUNNING "3D" EFFECT

IN NO TIME SOLUTION

UPGRADE INSTEAD OF REPLACE

HYGENIC

UPGRADE CLEAN, DUST-FREE AND ODORLESS